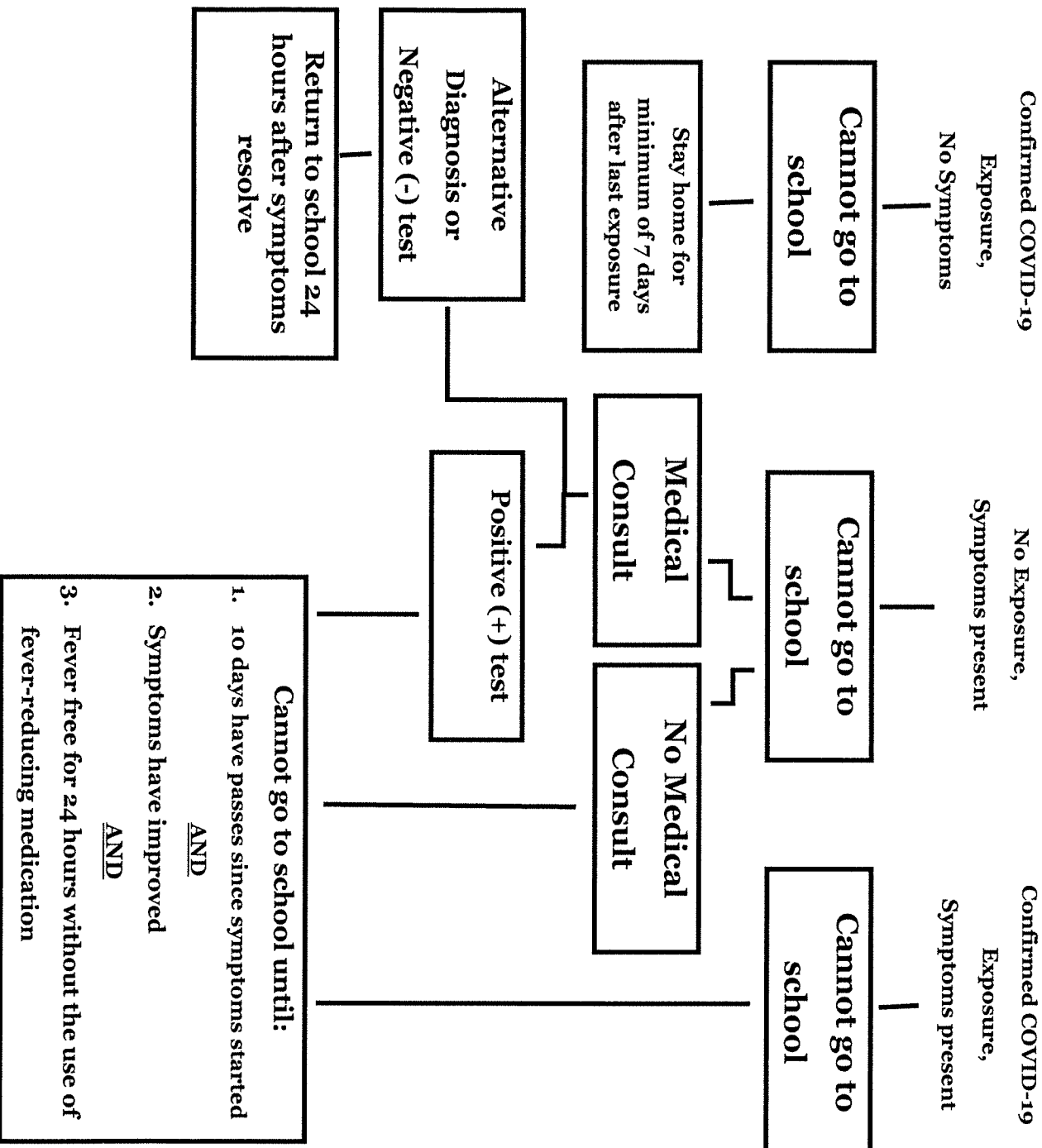


# COVID-19 Criteria for Staff/Student Exclusion



## *Exposure means*

Within 6 feet for more than 15 minutes to a person who tested positive to COVID-19 while they were infectious and people involved were not wearing a mask. A person is infectious 48 hours before their symptoms start (or before test date if asymptomatic) and until isolation is complete.

## *Symptoms*

### High Risk Symptoms:

- New of change in cough
- Shortness of breath or difficulty breathing
- New loss of taste or smell

### Low Risk Symptoms:

- Fever or chills
- Headache
- Nausea or vomiting
- Diarrhea
- Muscle aches
- Sore throat
- Fatigue
- Congestion or runny nose

Student or staff with any high risk or 2 or more low risk symptoms should stay home and are advised to seek an evaluation by a healthcare provider.